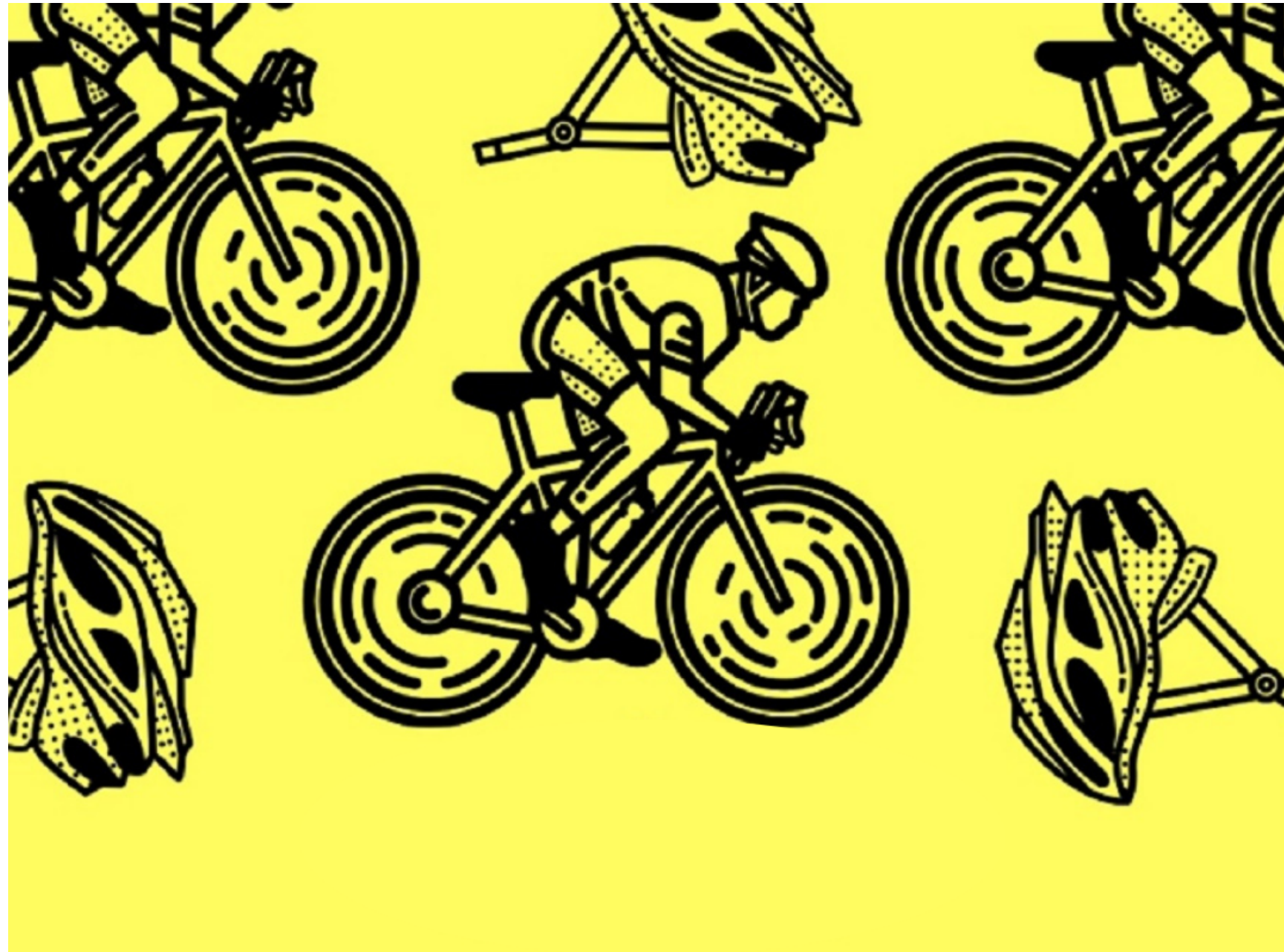


# SELL YOUR GEAR

---



## WHAT WE ACCEPT:

### DO's



- Fully functional new & Used bikes
- New & gently used clip-in pedals
- Clean apparel
- Lightly used helmets
- Bike Parts
- Pedals required on all bikes



### DON'Ts

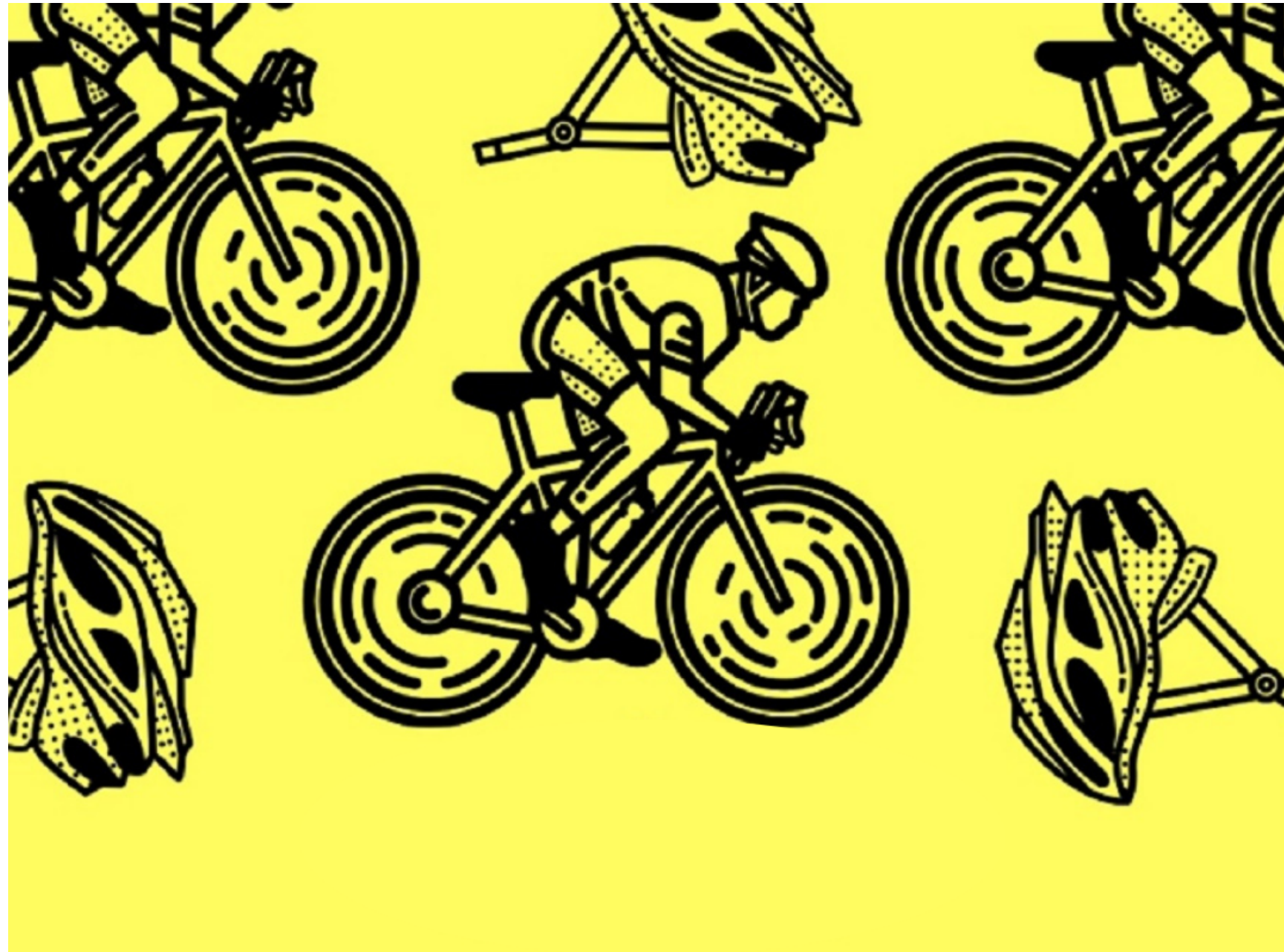
- Department Store Bikes (Walmart)
- Broken bikes
- Very used/ damaged helmets

**REMEMBER: PUBLIC CHECK-IN CUSTOMERS MUST PICK UP ALL UNSOLD GEAR ON SATURDAY, AUGUST 13TH FROM 4-5:30 PM. (SSCV IS NOT RESPONSIBLE FOR ANY UNCLAIMED GEAR AFTER 5:30 PM). ANYTHING NOT PICKED UP BY 5:30 PM ON SATURDAY, AUGUST 13TH IS CONSIDERED A DONATION TO SKI & SNOWBOARD CLUB VAIL AND WILL BECOME THE PROPERTY OF SSCV IMMEDIATELY.**



# TIPS FOR A SUCCESSFUL BIKE SALE

---



- Bike Swap staff will be unable to help you determine your bike's value. Look up the value of your bike by visiting [www.bicyclebluebook.com](http://www.bicyclebluebook.com)
- Freshen your bike up with new tires, grips.
- Wash your bike and drop it off sparkly clean.
- Inflate the tires and be sure to have pedals installed for a test ride.

**REMEMBER: PUBLIC CHECK-IN CUSTOMERS MUST PICK UP ALL UNSOLD GEAR ON SATURDAY, AUGUST 13TH FROM 4-5:30 PM. (SSCV IS NOT RESPONSIBLE FOR ANY UNCLAIMED GEAR AFTER 5:30 PM). ANYTHING NOT PICKED UP BY 5:30 PM ON SATURDAY, AUGUST 13TH IS CONSIDERED A DONATION TO SKI & SNOWBOARD CLUB VAIL AND WILL BECOME THE PROPERTY OF SSCV IMMEDIATELY.**